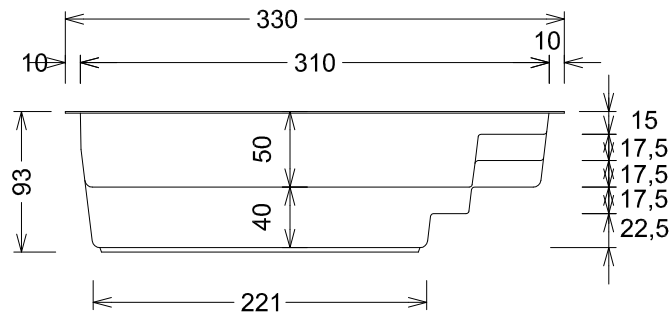
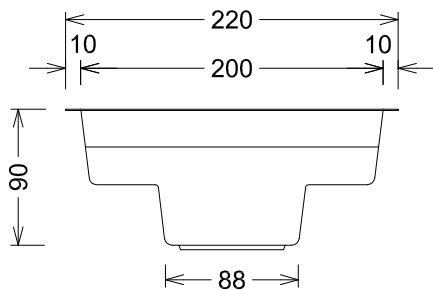


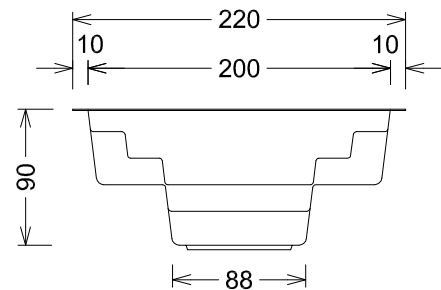
Grundriss - Ground plan



Seitenansicht - Side view



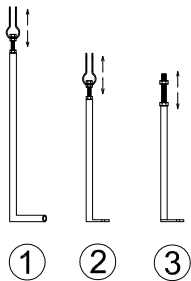
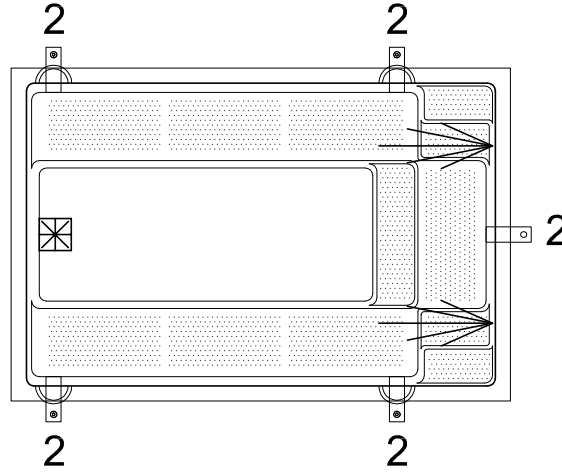
Ansicht Skimmerseite - View skimmer side



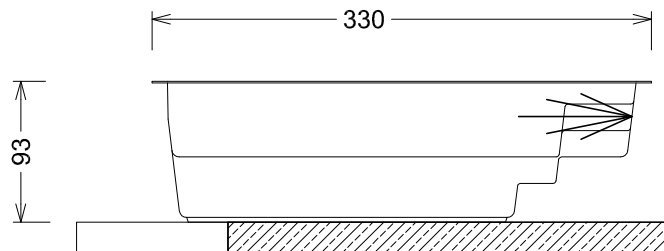
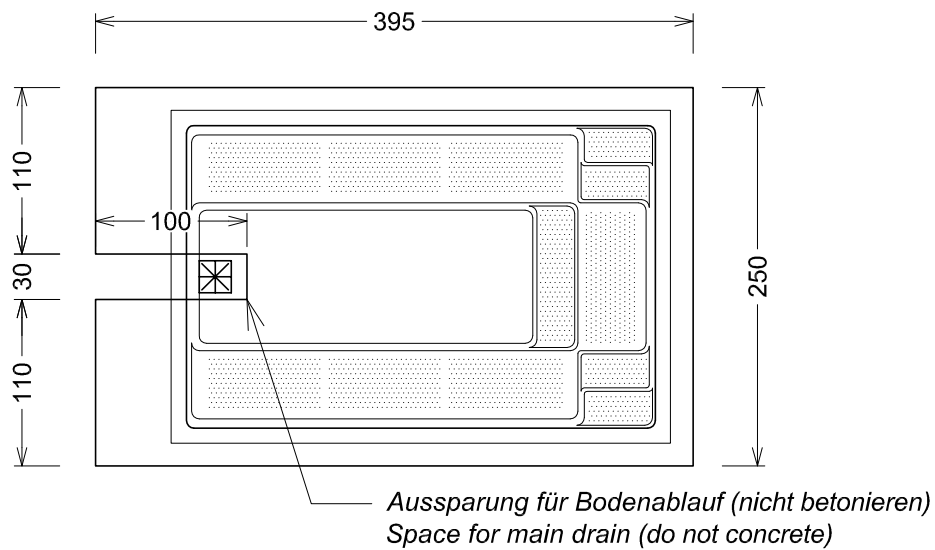
Ansicht Treppenseite - View stair side

Gewicht Schwimmbecken - Pool weight
ca. 220 kg

Wasserinhalt - Water content
ca. 3 m³



- 1 = Beckenstützen seitlich / lateral anchorages
- 2 = Beckenstützen vertikal (Zugstange) / vertical anchorages
- 3 = Beckenstützen vertikal M20 Druckstange / vertical anchorages M20



Fundamentplatte armiert laut örtlichen Bodenverhältnissen
Foundation slab, reinforced according to the local ground condition